

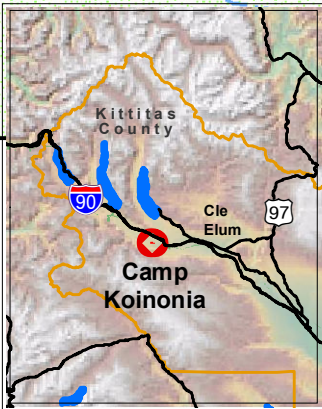
Closed until further notice:
Lower and Mid Canal Loops.

If continuing west on groomed snowmobile trail - be prepared to cross creek. No bridge.

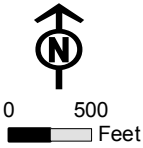
Exit Camp Koinonia at "W"

Seasonal Gate - Closed in Summer

5 Dog Loop
Permanent Gate



.05 mi = 264'
.1 mi = 528'
.5 mi = 2640'



- Hill, Arrow Points Down
- View
- Off Property Trail, labeled with distance in feet
- Dirt Road
- Residential Road
- Wide Gravel Road
- Groomed Snowmobile Trail
- Utility Corridor

**Camp Koinonia
Cle Elum, WA
Off Property
Sled Dog Trails**

All trails on this map are on private property.
Most are either narrow dirt tracks or wide compacted gravel subdivision roads.